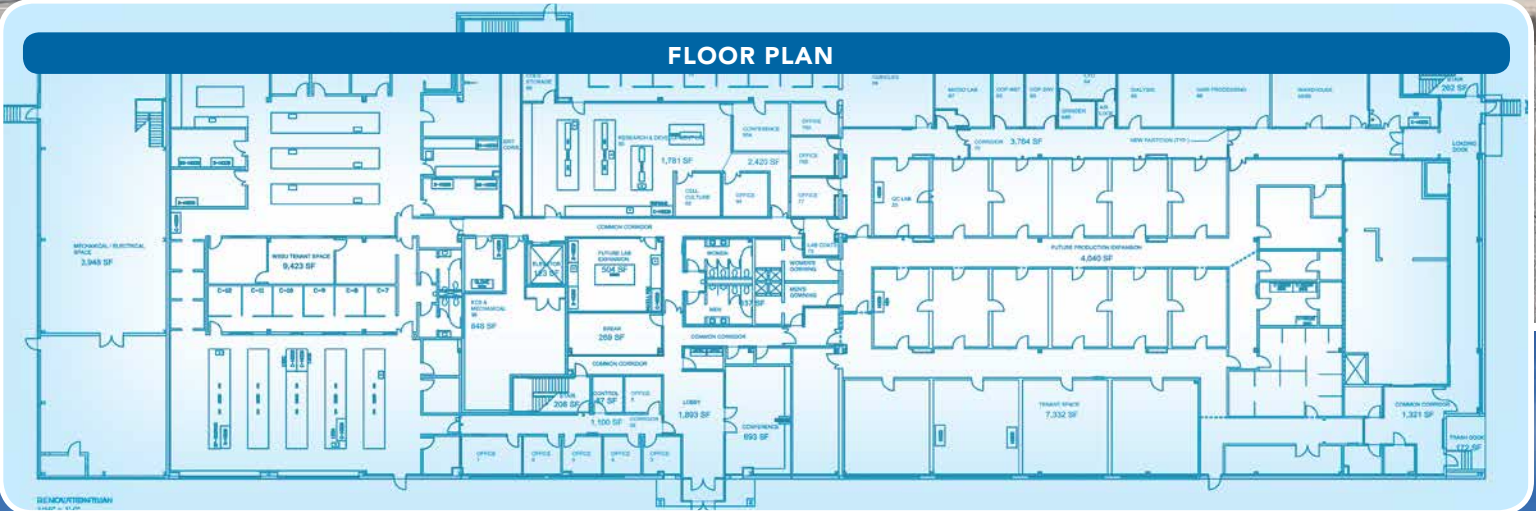


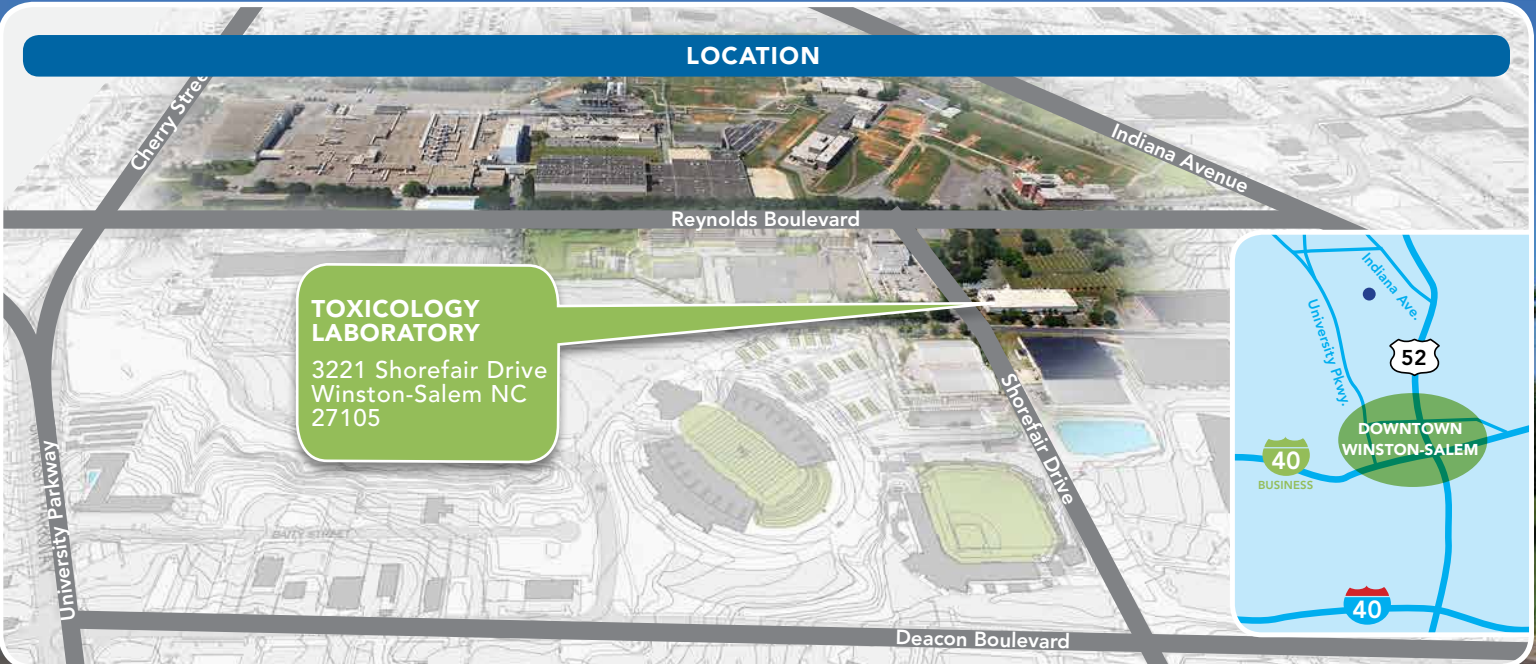
WHITAKER PARK TOXICOLOGY LABORATORY

APPROXIMATELY
50,000 S.F.
AVAILABLE

FLOOR PLAN



LOCATION



WHITAKER PARK TOXICOLOGY LABORATORY



BUILDING FEATURES

- Standalone 3.31 acre site
- Approximately 50,000 S.F. of wet lab and production space
- 2-story facility with hydraulic elevator
- Exterior walls constructed of insulated metal panels
- Structural steel columns, I-beams, metal decking and concrete metal slabs
- Building is sprinkled with fire detection
- Complete laboratory structure in place with high pressure compressed air, distilled and potable water, vacuum lines, nitrogen, 5-10% argon, helium, natural gas, oxygen and more.
- On-site Duke Power utility transformer (2000 KVA, 13200-480Y/277V)

LOCATION BENEFITS

Skilled Workforce

- A regional workforce of over 800,000
- Winston-Salem and Forsyth County have a Healthcare and Life Science workforce of over 20,000

Healthcare and Life Sciences

- 23.5% job growth in NC Since 2001 is the best of the 10 largest bioscience states*
- A 240 acre research park located in downtown Winston-Salem
- 1.1+ million square feet of world-class facilities

Education

- Focused training at Forsyth Technical Community College and a wealth of higher education options at area colleges and universities

Logistics/Distribution

- One of the largest concentration of trucking companies on the East Coast
- Fedex ground and UPS Ground both maintain regional sorting hubs in the area

*based on a January 2013 report by the Battle Technology Partnership Practice.